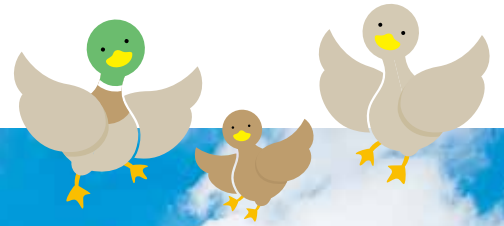


5 Reasons to Choose Keio SFC

GIGA(Global Information and Governance Academic) Program



5 Reasons to Choose KEIO SFC (Shonan Fujisawa Campus)

1

Become Adept at Creating the Future

Education at SFC does not follow the mold of being given a problem and learning the answer. The two interdisciplinary faculties at SFC work together to educate students in how to identify problems and develop methods to resolve issues found in modern society. SFC's state-of-the-art environment enables students to gain the integrated knowledge and skills they need to create the future and engage in learning that is focused on identifying and resolving problems. Students are encouraged to forge ahead with cutting-edge, experimental, and exciting endeavors. This is the SFC culture.



2

Build your own curriculum

A student's passion and drive are never hindered at SFC. The Super Flexible Curriculum allows students to learn in a way they find most suited to their personal themes and goals. Students who have the drive and skills can join seminars from their first year, and students in their fourth year can go back to learn the basics. You will be free to take courses and seminars from both the Faculty of Policy Management and the Faculty of Environment and Information Studies. Learning takes many forms at SFC, including numerous group work and fieldwork opportunities.

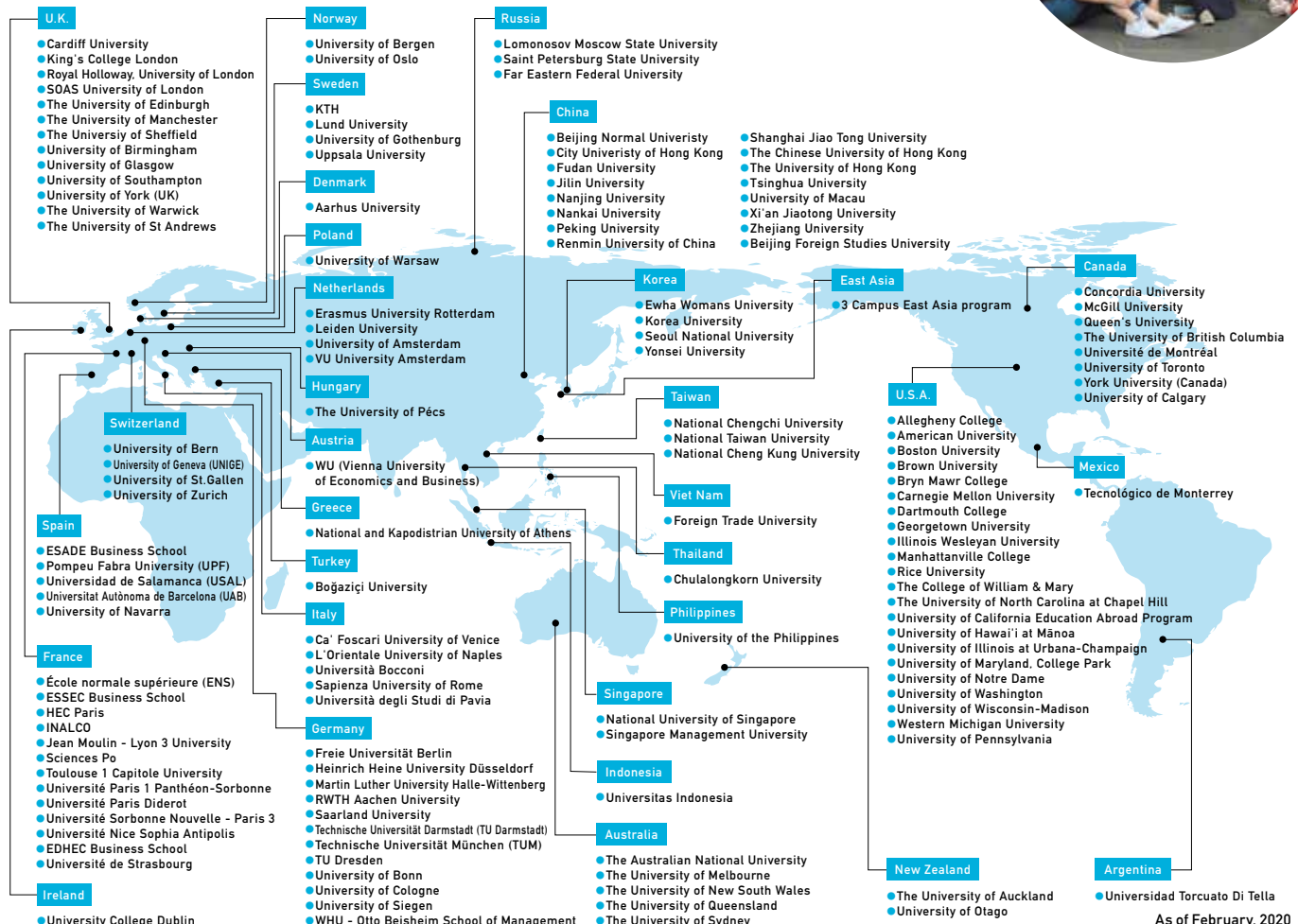
3

Learn in a truly diverse environment

The students and professors who come to SFC from all over the world have diverse backgrounds and interests. Undergraduate and graduate students interact on the same campus, and they often inspire each other when sharing ideas. There are also many opportunities for studying at major universities outside Japan, and eleven different languages are offered for study.



Partner Institutions for student exchange program



- Faculty of Policy Management
- Faculty of Environment and Information Studies



4

Focus on your studies in beautiful surroundings

SFC is located about 90 minutes from central Tokyo. Surrounded by nature, the campus gives you the luxury of studying while always being aware of the four seasons. Cherry blossoms herald the spring, lush new green signals the start of summer, foliage paints the campus with autumn colors in the fall, and on clear days in the winter, snow-capped Mt. Fuji makes an unforgettable appearance. Students at SFC can enjoy a safe and peaceful campus life not available to students in the city. They relax on the lawn between classes, go jogging around campus, and meditate while watching the ducks in the campus pond.



5

Build lifelong bonds and networks

At SFC, students and professors create strong bonds as they work closely together on research. In addition, Keio University is traditionally well known for having the strongest and most wide-ranging alumni network in Japan. The paths that SFC graduates take reach all parts of society: employees at corporations in every sector, entrepreneurship, government employees, engineers, researchers, artists, architects, and athletes.

For those interested in SFC

<https://giga.sfc.keio.ac.jp/>



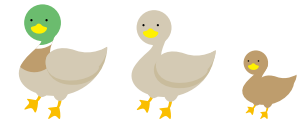
If you are interested in studying and earning a degree at SFC, rest assured, you do not need any Japanese language skills. Courses for the GIGA (Global Information and Governance Academic) Program at SFC are conducted entirely in English. You can also go through the admissions process without ever needing to be in Japan.

About the GIGA Program

The bachelor's degree program, taught entirely in English, welcomes resourceful, independent individuals who are motivated to explore their full potential. Students who have the Japanese language skills can also select courses from among the many offered in Japanese.

There is also the opportunity to obtain GIGA Program Certificate(s) by earning designated credits from GIGA Program courses and fulfilling a foreign language requirement.

Full application guidelines for those wishing to study on the GIGA Program at SFC will become available on the website.



Fields of Research at SFC

Novel Computing and Communication Systems

- Internet Systems and Applications
- System Software and Information Security
- Ubiquitous Computing and Networking
- Knowledge and Information Systems

Design Engineering and Media Art

- Visual and Music Design
- Product and Fashion Design
- Space and Communication Design

Advanced Biosciences

- Environmental Biotechnology
- Biomedical Science
- Genome Science
- Systems Biology

Environmental Design

- Global Environment and Technologies
- Spatial Informatics
- Ecology and Landscape
- Architecture and Urban Design

Human Environment

- Cognitive Science
- Sports and Skill Sciences
- Ergonomics and Human Interface
- Sociology and Psychology

Policy Design

- Economics and Public Finance
- Public Policy-making and Society
- Law and Institution

Social Innovation

- Social Entrepreneurship
- Social Venture Management
- Designing Information Society

International Strategy

- International Political Economy
- Regional Strategy
- Human Security
- Language, Culture and Communication

Business and Administration

- Business and Management Strategy
- Financial Engineering and Valuation
- Career Development

Sustainable Governance

- Environmental Policy
- Urban and Local Policy
- Housing and Community Policy

Red circles indicate main fields of research in the Faculty of Environment and Information Studies.

Blue circles indicate main fields of research in the Faculty of Policy Management.

Annual Schedule

Keio University Shonan Fujisawa Campus uses a semester system. The spring semester runs from April 1st to September 21st, and the fall semester runs from September 22nd to March 31st.



A day at SFC

(As of spring semester, 2019)

7:00

Wake up, followed by breakfast and a quick shower. Since I live near campus, I can take my time in the morning and still make it in time for school even if I walk.

9:00

This semester I'm taking courses focused on economics and the environment, but in the morning I usually have Japanese language lessons. The Japanese courses offered at SFC are quite intensive. My favorite part is the independent study period once a week.

12:00

If I have time between classes, I usually eat in the university cafeteria while catching up with my friends. A favorite of mine is agedashi tofu – Japanese deep-fried tofu in soy sauce – and the seasonal desserts.

13:00

During my free period, I work on my part-time job, which is marking English homework through an online platform.

15:00

Seminar. I observed a seminar on the sustainable development goals, and the group I belonged to collaborated with a known Japanese lifestyle company. Every week, we would do an analysis of the SDGs in relation to their consumer products and send it back to the company as their basis for improvement.

20:00

After a long day, I like to take my time slowly at home by cooking dinner and enjoying it while watching a musical DVD. I recently bought or catching up with any homework.

18:00

Circle meeting: I became part of the Tanabata Festival committee, as a member of the decorations department.



Nadya Yeni
 (from Indonesia)
 Faculty of Policy Management
 Enrolled in September 2018

For me, the greatest appeal of SFC is the total flexibility over your courses, and that everyone is welcoming no matter your capabilities. At a seminar, I only intended to observe what my seniors were doing at first, but they encouraged me to contribute my thoughts to the sustainable development analysis they sent to the company. I was attracted to SFC because I wanted to make a change to my surroundings, and here I am, taking one step at a time.

Number of international students

2,103 international students from more than 70 countries and regions are now studying at Keio University.

Among them, 286 students study at SFC.

Country	Number	Country	Number	Country	Number
China	131	Morocco	5	Uzbekistan	3
Korea	46	Hong Kong	5	Mongolia	3
Indonesia	21	United States	5	Germany	2
Taiwan	15	India	4	Turkey	2
Viet Nam	8	Thailand	4	Others	23
Australia	5	Malaysia	4	Total	286

The number of GIGA students (students who were accepted through the Admissions for Overseas Students (GIGA Program)) is currently over 200 and increasing year by year. (as of May 2019)

Student Voice: Korry Luke (From Hawaii, USA)

I have been interested in IT and engineering since high school. I was also interested in trying something new, from a cultural as well as an academic perspective. The fact that universities in Japan have lower tuition costs than those in the US was also an important factor. Applying to SFC's GIGA Program was not that different from a regular college application in the US.



The students come from many different backgrounds -- both at the undergraduate and graduate level, and that affects the environment and mindset. SFC is a diverse place where the focus is on your research goals. I think it's perfect for students who are motivated and passionate about their research field.

Read More:
<https://giga.sfc.keio.ac.jp/campus-life/student-voices/>



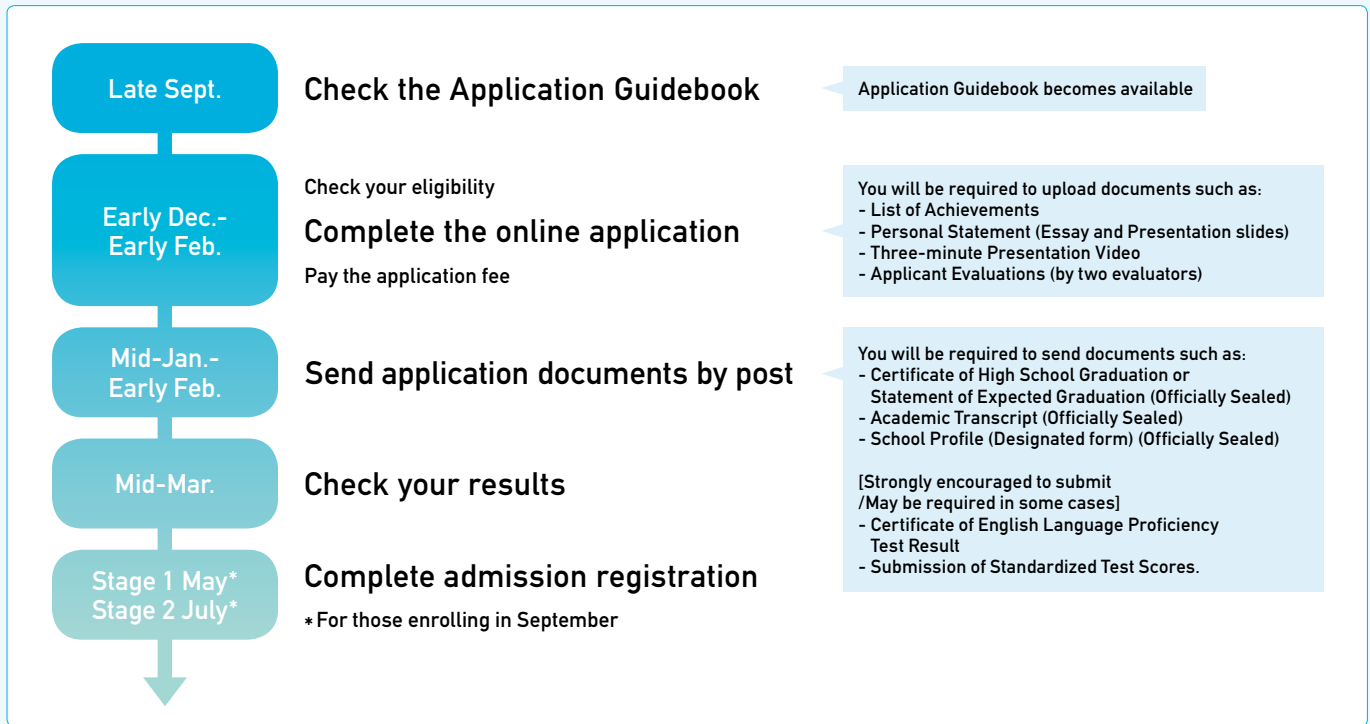
How do I apply to the GIGA Program?

Eligibility

If you have completed, or are expected to complete, 12 years or more of formal education, you are eligible to apply to the GIGA Program. Some applicants may be required to submit scores from standardized tests and/or a certificate of results from an English language proficiency test. Please check the Application Guidebook for details.

Application Procedures

The application process involves an online application portion as well as submission of documents by post.



There is no interview or written examination. Applicants do not need to visit Japan before enrollment.

If you would like to apply to the GIGA Program, please make sure to check the Application Guidebook for details.
https://www.sfc.keio.ac.jp/en/admissions/undergraduate/ao_global.html



Academic Fees and Living Costs

<https://giga.sfc.keio.ac.jp/cost/academic-fees/>



Academic Fees for One Year	Living Costs	Total Costs for One Year
New student in 2020: JPY 1,591,350 ≈ USD 13,838	Per month: JPY 124,000 ≈ USD 1,078	New student in 2020: JPY 3,079,350 ≈ USD 26,777
From the second year onward: JPY 1,391,250 ≈ USD 12,098	Per year: JPY 1,488,000 ≈ USD 12,939	From the second year onward: JPY 2,879,250 ≈ USD 25,037

(Rate JPY 115=USD 1)

Scholarships

Application for the following two scholarships can be made only at the time when you apply to the GIGA Program described above. Scholarship award notification will be made at the same time successful applicants to the GIGA Program are announced.

<https://giga.sfc.keio.ac.jp/cost/scholarship-information/>



Scholarships Exclusively for GIGA Program International Students (excerpt)

Japanese Government (MEXT) Scholarship	Amount: Application Fee, Admission Fee, Academic Fees for one year (2021 Fall semester and 2022 Spring semester), Monthly living cost (JPY 117,000= USD 1,017, yearly JPY1,404,000=USD 12,209) and travel costs Renewable: Up to four years (subject to annual review such as a required GPA above 3.4)
MASATADA KOBAYASHI Scholarship for International Students	Amount: JPY 1,000,000 (USD 8,696)/year for academic fees Renewable: Up to four years (subject to annual review)

(Rate JPY 115=USD 1)

After enrollment, there are more than 100 scholarships for Japanese/international students.

<https://www.students.keio.ac.jp/en/sfc/scholarships/unique/index.html>



Contact

Keio University:
<https://www.keio.ac.jp/en/>



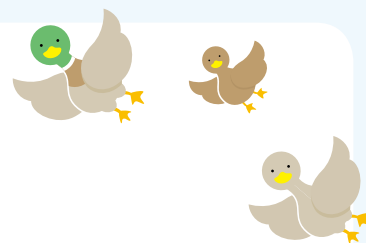
GIGA Program :
<https://giga.sfc.keio.ac.jp/>



Questions :
<https://giga.sfc.keio.ac.jp/contact-us/general-inquiry/>



FAQ



Q Can you tell me about Keio University?

A Established in 1858 by Yukichi Fukuzawa, Keio has a history as Japan's very first private institution of higher learning. Approximately 33,000 students study at Keio University's 10 undergraduate faculties and 14 graduate schools located among 6 campuses throughout the Greater Tokyo Area. SFC is one of those campuses.

For more information, refer to:
<https://www.keio.ac.jp/en/about/>



Q Can you tell me about graduates of SFC?

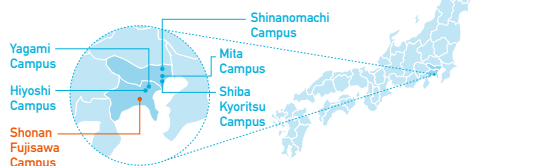
A About 70% of graduates of the Faculty of Policy Management and the Faculty of Environment and Information Studies go on to work in corporations in a vast array of sectors. Almost 20% go on to graduate studies, and about 10% choose other paths. The large number of graduates who become entrepreneurs is a defining characteristic of SFC.

For more information, refer to:
<https://giga.sfc.keio.ac.jp/career-development/career-services-section/>



Q Where is Keio University Shonan Fujisawa Campus located?

A SFC is located in Fujisawa City, Kanagawa Pref., which is in the southern region of Greater Tokyo Area called Shonan.



Q What is the minimum required band score on standardized tests for admission to the GIGA Program?

A There is no minimum required band score and the average score of successful applicants is not made public.

Q What level of Japanese is required for acceptance into the GIGA Program?

A There are no Japanese language requirements for entering the University or for applying to the GIGA Program.

Q Can I apply from outside of Japan?

A You do not have to be in Japan to apply to the program.

For more information, refer to:
https://www.sfc.keio.ac.jp/en/admissions/undergraduate/ao_global.html



Q Will I be able to study Japanese at SFC?

A All levels of Japanese language classes are offered, from beginner to advanced, to meet the individual needs of international students. Outside of classes, free study support services are offered. The curriculum is designed so that even students who have no prior Japanese language skills can achieve N2-level Japanese language skills if they take Japanese language courses for four years.

Q Can international students participate in extracurricular activities?

A A wide range of extracurricular activities, including sports, cultural, volunteer-related, etc., is available, and most students find a student organization or club they can wholeheartedly participate in.

For more information, refer to:
<https://www.keio.ac.jp/en/student-life/athletics-recreation.html>



Q Are there student dormitories?

A There are many apartments and privately owned dormitories located near and around Keio University SFC. Although there is currently no on-campus housing available for students, the Student Life Section can assist students with finding a place to live while they study at SFC.

For more information, refer to:
<https://giga.sfc.keio.ac.jp/cost/housing-and-living-costs/>



Q Can international students work part-time?

A To hold a part-time job in Japan, permission must first be obtained from the Immigration Bureau of Japan. Part-time jobs for international students are limited to 28 hours per week. In general, the types of jobs open to international students require some Japanese language skills.

For more information, refer to:
<https://giga.sfc.keio.ac.jp/campus-life/part-time-job/>

